

BELZONA PROTECTS HYDROELECTRIC TURBINE CASING

CUSTOMER

Hydroelectric power plant in Japan

APPLICATION DATE

March 1996

APPLICATION SITUATION

Spiral casing of large Francis turbine

PROBLEM

Erosion-corrosion caused by the flow of river water through the turbine over many years.

PRODUCTS

Belzona® 1341 (Supermetalgilde)

SUBSTRATE

Cast iron

APPLICATION METHOD

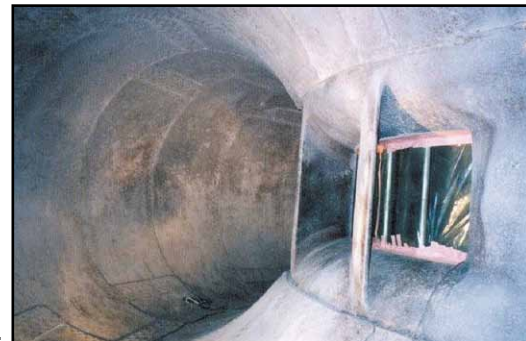
The application was carried out in accordance with Belzona Know-How System Leaflet CEP-10. The Belzona® 1341 was applied by airless spray to speed application on the large areas involved.

BELZONA FACTS

The area was previously treated with a tar-epoxy coating, but this had to be re-applied annually. The Belzona® 1341 has provided long term protection. Annual inspections have been carried out and only localized repairs to minor mechanical damage have been required. Customer is totally satisfied with the application.

PICTURES

1. The casing after grit blasting.
2. The casing after application of Belzona® 1341.
3. The scale of the application is clearly evident.



For more examples of *Belzona Know-How In Action*, please visit <http://khia.belzona.com>



Belzona products are manufactured under an ISO 9000 Registered Quality Management System.

UK • USA • Canada • China
www.belzona.com

